

CISCO CCNA - Part Time

WHY Study With Us?

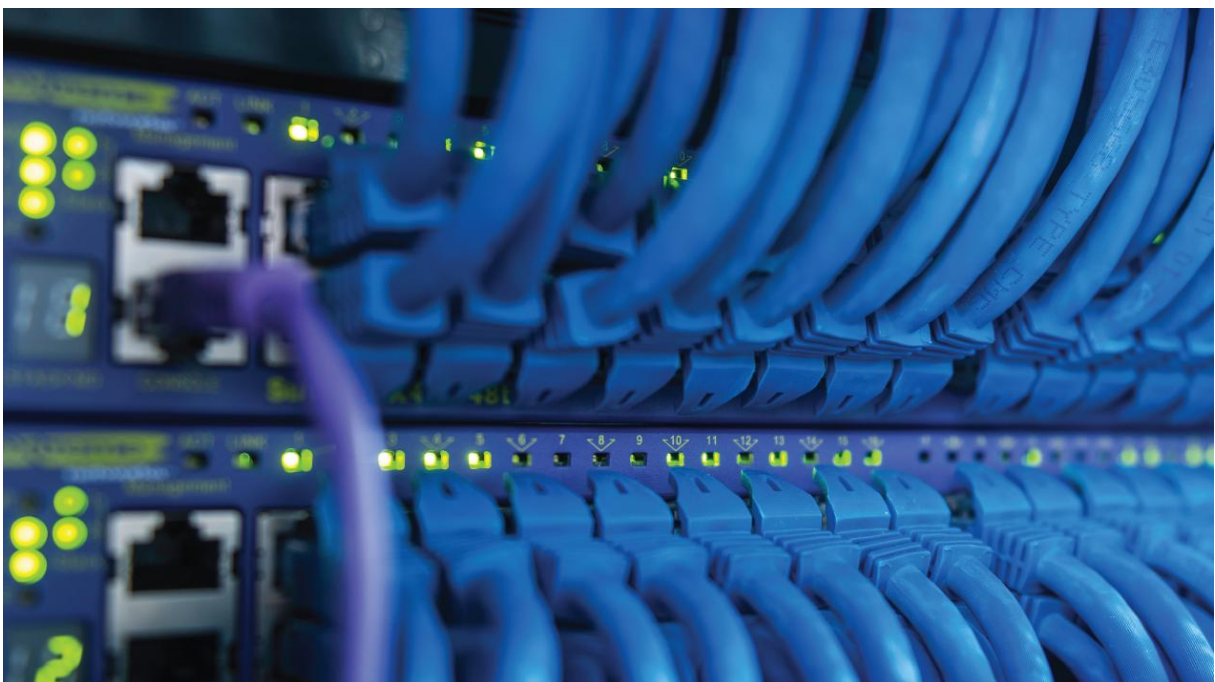
- Experienced Trainer
- Real Cisco hardware dedicated to each student
- Gain a Computer Networking Certification*
- Workbooks provided
- Modern training facilities

*CCNA External Examination T's & C's Apply

This part time course is designed to prepare the student to sit the Cisco CCNA exams. These cover fundamental network topics including routing and switching.

CCNA Exam v1.1 (CCNA 200-301) is a 120-minute exam associated with the CCNA certification. This exam tests a candidate's knowledge and skills related to network fundamentals, network access, IP connectivity, IP services, security fundamentals, and automation and programmability.

The CISCO CCNA course helps candidates prepare for this exam by implementing and administering Cisco Solutions (CCNA).



Trainer

Your trainer, Alex Blinov, has almost 2 decades of experience in IT and works for one of New Zealand largest businesses, managing thousands of networking devices. He has successfully delivered this training in the past, with successful student outcomes! Currently Alex works as a senior network engineer and carries a number of networking certifications, including:

- Cisco Certified Network Associate (CCNA),
- Cisco Certified Network Professional (CCNP),
- Cisco Certified Internetwork Expert (CCIE Written),
- Cisco Certified Internetwork , Professional (CCIP),
- Cisco Certified Security Associate (CCNA Sec.),
- Cisco Certified Voice Associate (CCNA Voice),
- Juniper Networks Certified Internet Associate (JNCA),
- Juniper Security Specialist (JNCIS),
- and Juniper Security Professional (JNCIP)
- Fortinet Network Security Professional (NSE4)

Course Content

1.0 Network Fundamentals	20%	▼
2.0 Network Access	20%	▼
3.0 IP Connectivity	25%	▼
4.0 IP Services	10%	▼
5.0 Security Fundamentals	15%	▼
6.0 Automation and Programmability	10%	▼

Entry Requirements

Basic IT related skills and understanding.

Graduate Opportunities

The topics in this course cover computer networking in general and is relevant to several roles in the IT sector such as Network Engineer, Systems Engineer, Network Administrator and Service Desk Analyst.

Study Options (On campus)

2 days a week, Tuesdays & Thursdays 6pm-9pm, over 11 weeks

First intake

1st April 2025

ENROL TODAY!

Fees

\$1,600 (*enrol before 17th March 2025 and receive 10% off the full fee*)